

USE ALL PHOTOVOLTAIC ENERGY AT HOME WITH WATTRouter



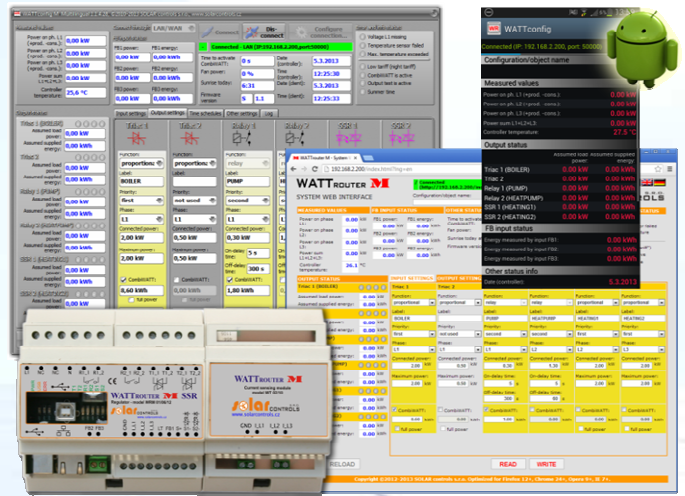
www.solarcontrols.cz/en

We announce new useful devices:

- **WATTRouter M SSR**
(6 outputs, measuring range 3x20A)
- **WATTRouter M MAX**
(6 outputs, measuring range 3x100A)

What you get by installing these devices?

- ✓ YOU WILL BE ABLE TO CONSUME MAXIMUM OF ELECTRICITY PRODUCED BY YOUR PHOTOVOLTAIC PLANT AT HOME, WITHOUT FEEDING IT TO UTILITY GRID
- ✓ YOU MAXIMIZE THE EFFECTIVITY OF YOUR PHOTOVOLTAIC AND IMPROVE YOUR RETURN ON INVESTMENT
- ✓ YOU CONTRIBUTE TO UTILITY GRID VOLTAGE STABILITY AND HELP TO PROTECT THE ENVIRONMENT



Brief description

The WATTRouter M controllers are clever and versatile programmable devices which allow for accumulation of surplus (exceed) energy produced by your photovoltaic (or wind) power plant. They provide effective non-electric accumulation **without the need of expensive batteries**. These devices are applicable anywhere a self-consumption enabled tariff is available for micropower PV-plant users.

The controllers consist of 2 functional parts: current sensing module and regulator.

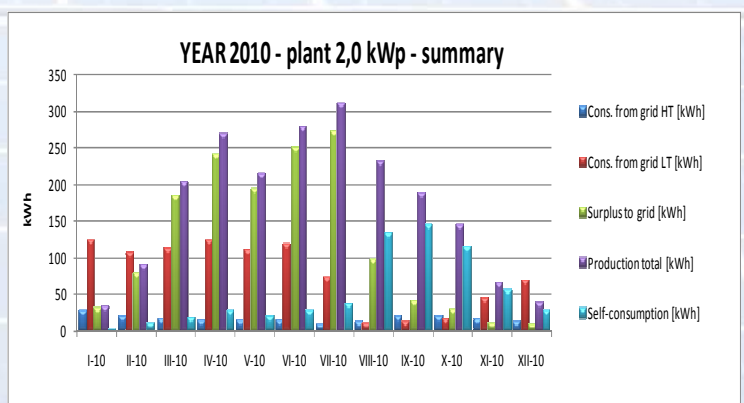
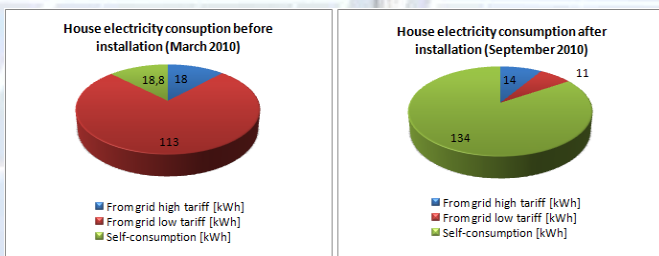
The current sensing module just measures currents flowing from and into your house. The regulator evaluates measured currents and according to sampled voltage calculates the power and its direction (production or consumption). If production is detected then built-in outputs in the regulator turn on according to programmed priority schemes and switch connected loads. The controller always tries to maintain zero energy flow through the current sensing module and thus your main electricity meter.

To be able to self consume PV energy you need heating loads, such as boilers, high capacity water heaters, heating elements, swimming pool heaters etc. The same applies for air conditioners, swimming pool pumps, heating pumps or similar loads suitable to accumulate or use electricity at production time.

The controllers can be simply programmed via USB or Ethernet interfaces. Web interface, Windows and Android applications are also available. Devices have full compliance tests.

Example

Roof PV plant 2.0 kWp. On 20. 7. 2010 a boiler was connected with volume 160l, 1,6 kW, through WATTRouter. Starting with this day consumption from grid decreases and surplus energy is used



instead.

Product manufacturer:

BROJOVA 2053/25
32600 PLZEN (PILSEN)
CZECH REPUBLIC
ID: 29109795
www.solarcontrols.cz/en

Your distributor:

